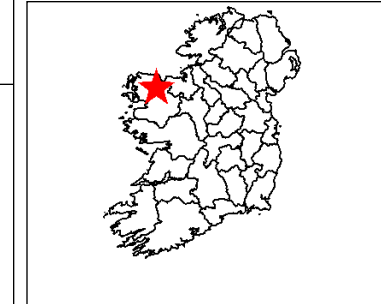
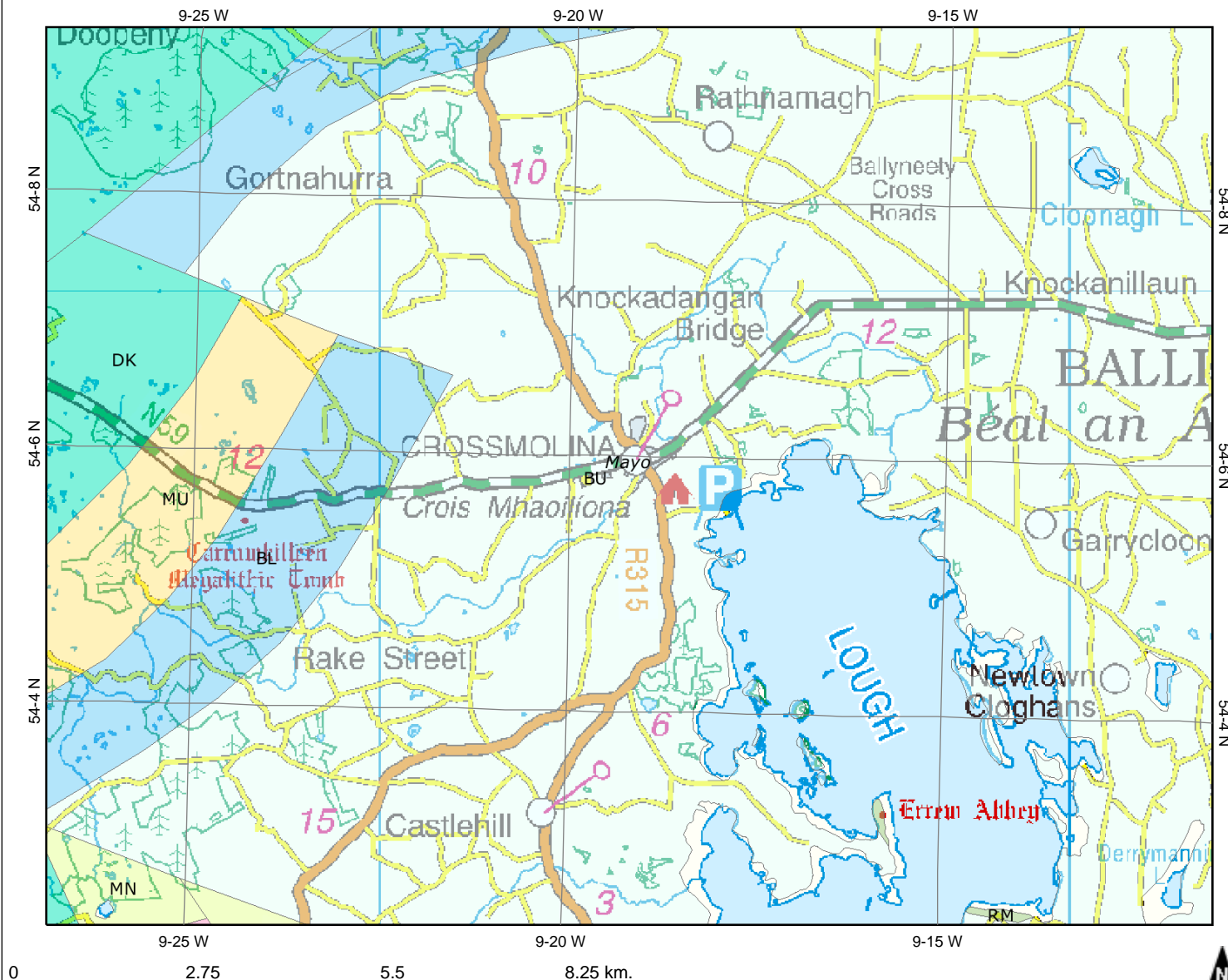




# Bedrock Geology



**Legend**

**Bedrock 100k Solid Geology**

- AA - Aille and Barney Fms (undifferentiated)
- AA - Allen Andesite Formation
- AAwp - Westport Oolite
- AB - South Achillbeg Formation
- ABcg - Achillbeg Conglomerate Member
- ABps - Achillbeg Lighthouse Psammite Member
- ABsl - Achillbeg School Black Slate Member
- AD - Aghaward Formation
- AD - Ardagh Shale Formation
- AD - Ardenagh Formation
- AD - Ashleam Bridge Dolomitic Formation
- AE - Aghamore Formation
- AE - Ardane Formation
- AG - Addergoole River Formation
- AG - Aghfarrell Formation
- AG - Aghmacart Formation
- AGdh - Dowery Hill Member
- AGdo - Aghmacart Formation
- AH - Achill Head Formation
- AH - Arklow Head Formation
- AHfv - in Arklow Head Formation
- AI - Aille Limestone Formation
- AK - Aslingarran Formation
- AL - Altan Limestone Formation
- AL - Annascaul Formation
- AL - Argillaceous Limestones (Visean)
- ALmk - in Argillaceous Limest (Visean)
- AN - Anaffrin Formation
- AN - Annabella Formation
- ANgm - Glennamong Member
- ANrd - Old Road Member
- AP - Ards Pelite Formation
- AP - Achleam Head Formation

**Scale: 1:91,165**

Copyright Ordnance Survey Ireland/Government of Ireland, DCENR, GSI. Ordnance Survey  
This map is a user generated static output from an Internet mapping site and is for general  
reference only. Data layers that appear on this map may or may not be accurate, current, or  
otherwise reliable. THIS MAP IS NOT TO BE USED FOR NAVIGATION.