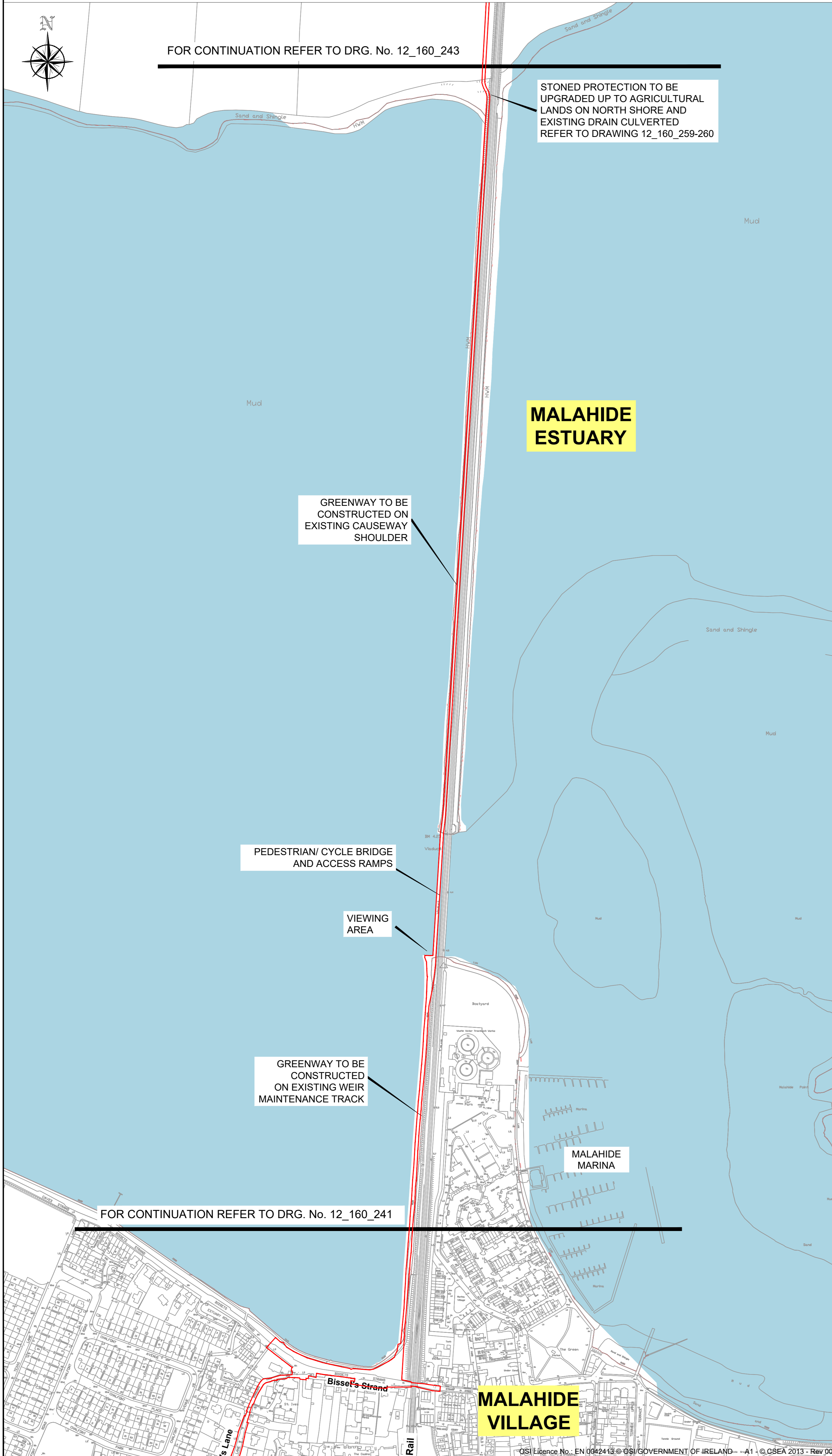




Broadmeadow Way Proposed Route - Sheet 2 of 3



FOR CONTINUATION REFER TO DRG. No. 12_160_243

STONED PROTECTION TO BE
 UPGRADED UP TO AGRICULTURAL
 LANDS ON NORTH SHORE AND
 EXISTING DRAIN CULVERTED
 REFER TO DRAWING 12_160_259-260

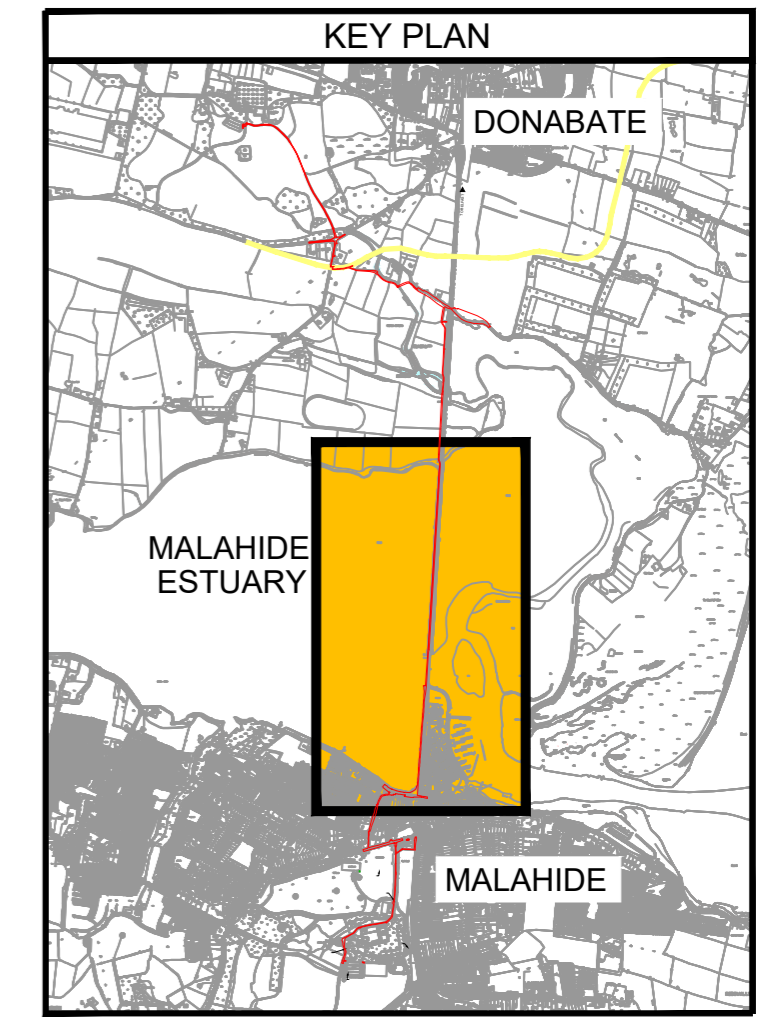
GREENWAY TO BE
 CONSTRUCTED ON
 EXISTING CAUSEWAY
 SHOULDER

PEDESTRIAN/ CYCLE BRIDGE
 AND ACCESS RAMPS

VIEWING
 AREA

GREENWAY TO BE
 CONSTRUCTED
 ON EXISTING WEIR
 MAINTENANCE TRACK

FOR CONTINUATION REFER TO DRG. No. 12_160_241



Legend:

Proposed Development Area	
Malahide Demesne	
Newbridge Demesne	
Malahide Estuary	

Revision	Description	Initials	Date



Project	Broadmeadow Way		
Dwg. Title	Overall Layout (Sheet 2 of 3)		
Drawn By		Date	April 2019
Checked by		Scale	NTS @ A1
Dwg. No.	12_160_242		